



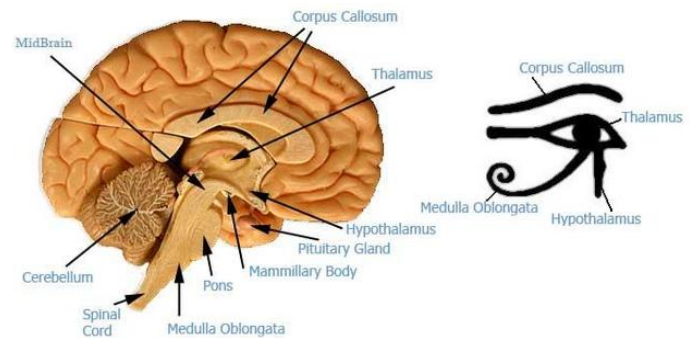
TWIN MOONS - INFORMATION SHEET

The Pineal Gland (3rd Eye/6th Ajna (Indigo) Chakra)

In a spiritual sense, most of us would be more than familiar with the 7 traditional Chakra's that make up the Energetic "central Nervous System" for a 3D human Mind/Body/Spirit complex (to quote 'Law of One').

Looking at the physical manifestation of the 3rd Eye (the Pineal Gland), it has been referenced in a significant cross section of ancient writings, sculpture, & sacred art work using the metaphor of the 'Pine Cone' or in Egypt as the 'Eye of Horus or Eye of Ra/Re'.

The simple explanation as to why the Pine Cone is used as an analogy is the fact that the Pineal Gland is shaped like a Pine Cone. And why the references to the Eye of Horus/Ra – well dissect the Pineal Gland & it looks like the Eye of Horus:



The similarities are far too great for this to be a coincidence – so why would this depiction of a cross-section of the Pineal Gland feature so prominently in Egyptian myth & legend? To the point that the Eye of Horus/Ra is actually recognised as a separate and unique deity to Ra or Horus themselves (with a distinct set of properties, attributes & persona).



TWIN MOONS - INFORMATION SHEET

Facts about the Pineal Gland:

- Pineal gland is located in the approximate centre of the Brain.
- The Pineal Gland plays multiple roles, however as a 'Endocrine' Gland it secretes hormones & chemicals into the Human body. These include Melatonin (the sleep hormone) & small amounts of DMT (Dimethyltryptamine)** – more on this later.
- The interior of the pineal gland has retinal tissue composed of rods and cones (photo-receptors) inside its interior lining just like the eye, and is like our eyes, wired into the visual cortex in the brain.
- Physically the Pineal gland is capable of recognising & transmitting light signals to the brain (just as the 2 external eyes do).
- Crystals of DMT float in a 'fluid layer/bubble' located in front of the retinal tissue (light receptors).

Notes on DMT -

- When struck by a hammer, DMT crystals have been observed to emit visible wavelengths of light (photons)
- DMT (Dimethyltryptamine) is a powerful hallucinogenic agent, which the Pineal Gland secretes throughout the day/night, however in its highest quantity between 3.00-4.00am.
- DMT occurs naturally in almost all plant and animal life on the planet (in miniscule quantities), however is found in large volumes in the psychoactive plant "chacruna", which combined with the Ayahuasca Vine or lowaska, produces the "Ayahausca" compound (which when brewed & digested induces mind altering states used by Shaman's for centuries).

Spiritual Connection

Taking these physically demonstrated facts outlined above, it is not only possible but plausible that given the appropriate conditions, the 3rd eye could actually be capable of receiving visible light information (generated by the DMT crystals 'suspended in the fluid solution', as emissions of visible light).

Why would a crystal emit visible light - it is suggested that emission may be 'as a consequence' of the reception of non-visible energetic frequencies (in much the same way that quartz crystals can be used/tuned to receive radio waves in a "crystal set" radio).



TWIN MOONS - INFORMATION SHEET

Spiritual Conclusion

What we have been able to establish is a plausible model for reception of higher frequency energetic emissions, that are subsequently translated into visible light images, received by retinal tissue in the Pineal gland & transmitted via an “optical nerve” to the visual cortex of the brain as “images”.

This mechanism, once fully activated, healthy (uncalcified) & receptive to these higher energetic frequencies, provides a “connection” for transmission of visual input between energetic bodies & a physical body. This provides an avenue for our Consciousness “Focus” to shift between each of the “bodies” using these vehicles to interact with their respective higher frequency energetic planes, whether this be Astral (lower/Higher), Various Subtle Planes or even higher frequency planes.

The key limiting factor here would be associated with the “frequency” that can be reached/achieved or “tuned to”. This is thought to be largely influenced by the “Density” of the Consciousness of the individual.

Key Note of Fluoride – Not a positive additive at all. Thought to aid in/contribute to the calcification of the Pineal gland. (get rid of it from our environment).